

Architecture 1

Ariadne is working with award winning Australian architects, JMA, to design the development in a way that minimises the built presence of buildings and seeks to make the development an iconic architectural addition to the area.

Buildings have been designed to:

- complement the qualities of the site to create a memorable, contemporary and distinctive space
- reinforce views and vistas through the site and out to the Clyde River
- minimise site coverage and maximise open space
- reduce the visual bulk and scale of the development
- ensure a high level of environmental performance through passive ventilation and good access to sunlight

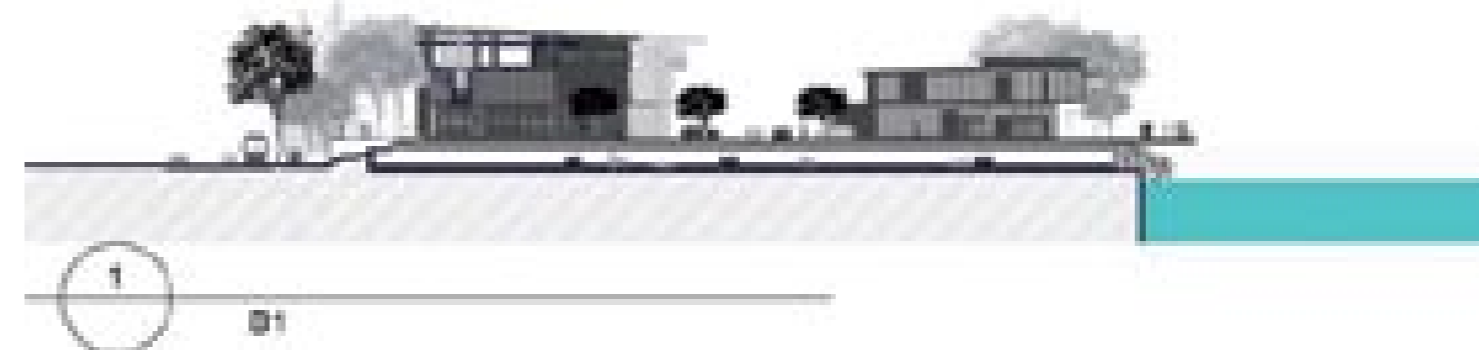
The proposed development responds fully to Council's plans for the Batemans Bay foreshore and is consistent with the objectives of Council's land use and development controls for the area surrounding the site.



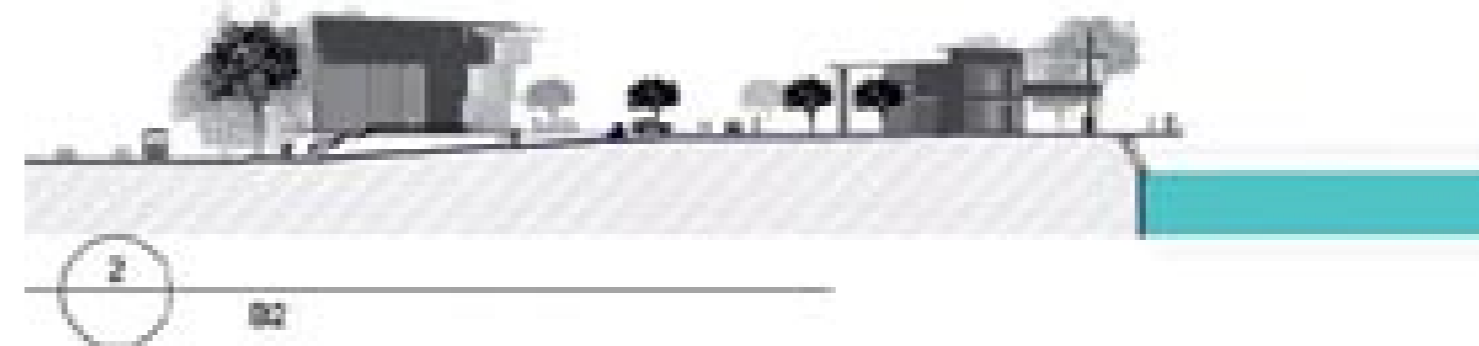
Artist impression



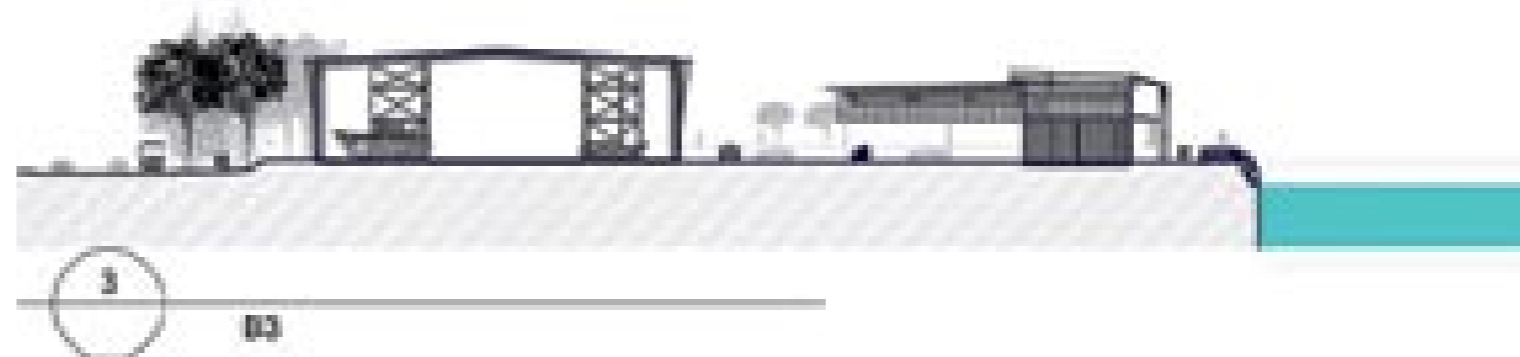
Artist impression through entrance from Beach Road



Section through Community Commercial sub-precinct



Section through major entrance to the site



Section through Marina sub-precinct



Elevation of redeveloped Batemans Bay Marina from across the water

